

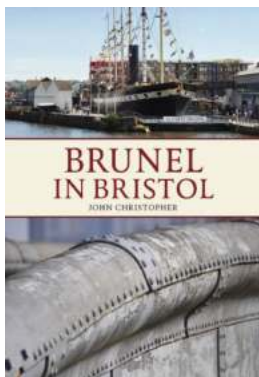
# Brunel In Bristol John Christopher - Unlocking the Legacy of the Engineering Marvel!

Brunel in Bristol John Christopher. The name itself carries an air of engineering brilliance and revolutionary ideas. Born on April 9, 1806, in Portsmouth, England, Isambard Kingdom Brunel was destined to become one of the most celebrated engineers of his time. His innovative engineering projects, particularly in Bristol, left a profound impact on the world we live in today. In this article, we delve into the life and achievements of Brunel, uncovering his extraordinary legacy.

## A Visionary Ahead of His Time

Brunel's remarkable vision allowed him to break new ground in various engineering disciplines. His capabilities and determination drove him to think beyond conventional limits, propelling him to create marvels that have stood the test of time.

One of Brunel's most noteworthy projects was the Clifton Suspension Bridge. Spanning the Avon Gorge in Bristol, it boldly exhibits Brunel's revolutionary design and engineering prowess. The bridge, completed in 1864, remains a prominent landmark in the city, a testament to Brunel's ingenuity.



## Brunel in Bristol by John Christopher (Kindle Edition)

★★★★☆ 4.5 out of 5

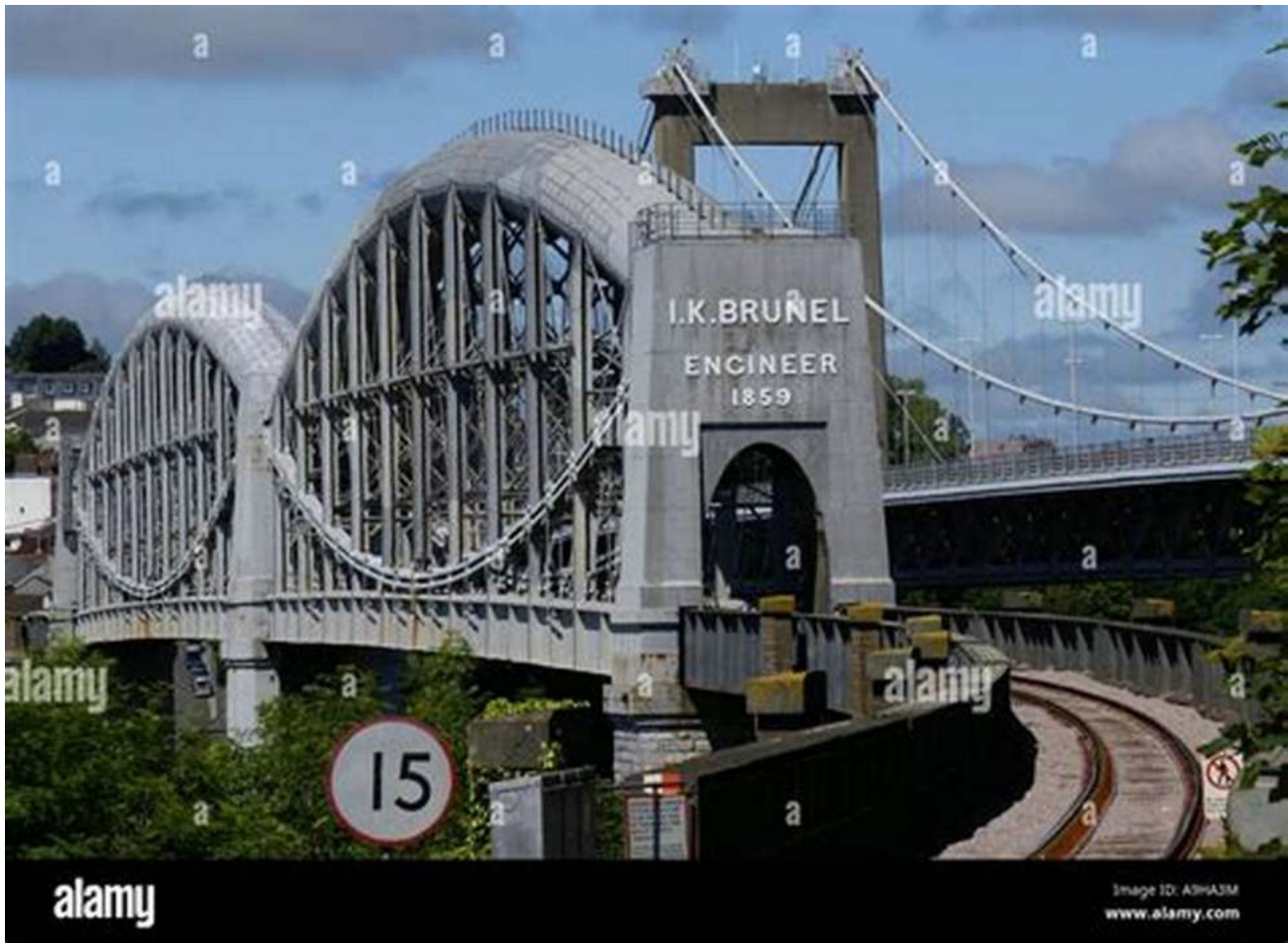
|                      |             |
|----------------------|-------------|
| Language             | : English   |
| File size            | : 10926 KB  |
| Text-to-Speech       | : Enabled   |
| Screen Reader        | : Supported |
| Enhanced typesetting | : Enabled   |
| Print length         | : 96 pages  |
| Lending              | : Enabled   |



**Bridging Distances and Connecting Communities**

The Clifton Suspension Bridge, with its iconic towers and elegant structure, links two sides of the Avon Gorge that were previously inaccessible. Brunel's determination to design a bridge that could withstand the harsh weather conditions of the area pushed him to create a masterpiece that continues to captivate visitors and locals alike.

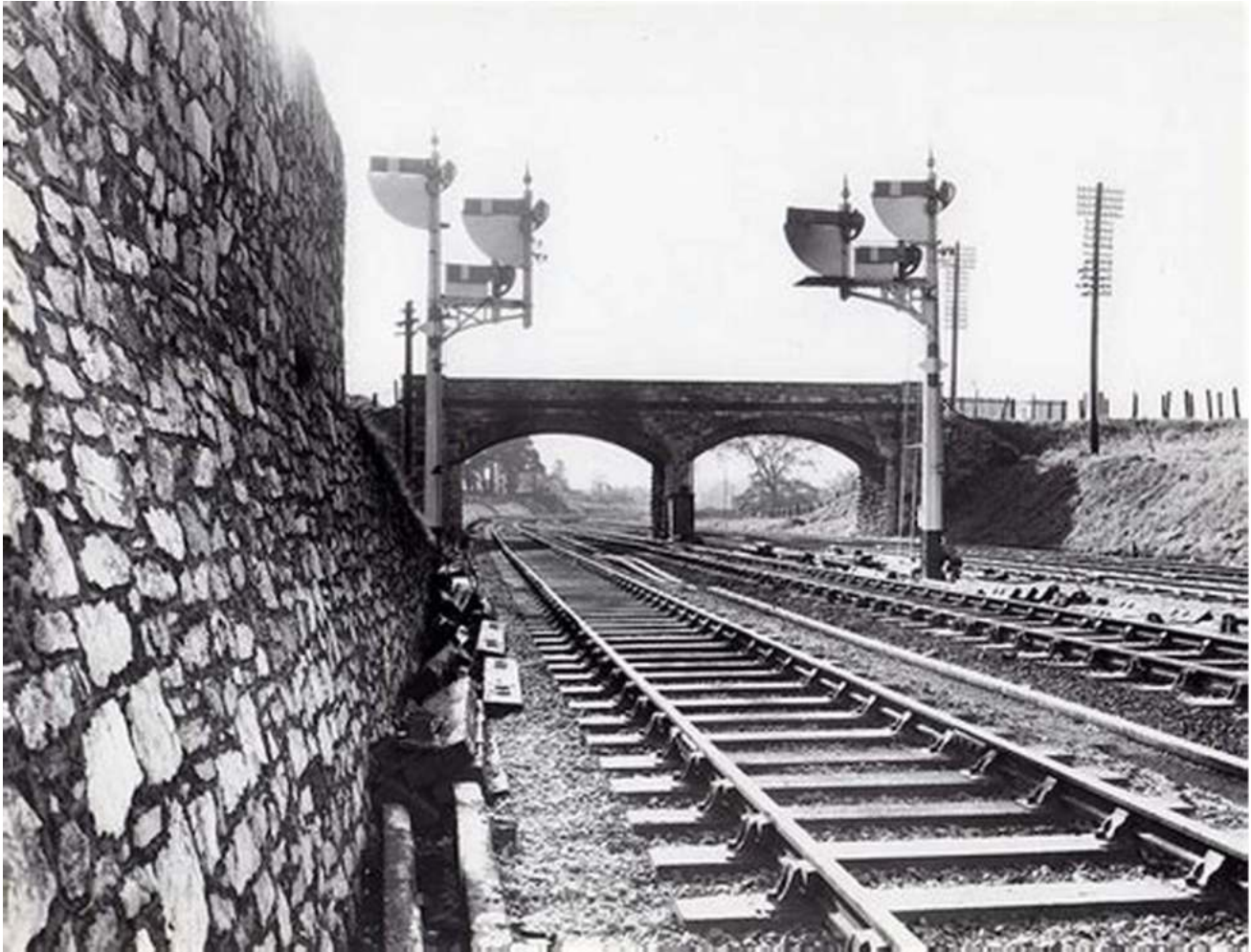
Brunel's expertise in bridge engineering is also evident in his design of the Royal Albert Bridge in Saltash, Cornwall. This magnificent bridge, completed in 1859, crosses the River Tamar, connecting Devon and Cornwall. The intricacy and grandeur of the Royal Albert Bridge are testaments to Brunel's exceptional talent and unwavering commitment.



## Transforming Transportation and Travel

Brunel's contributions to transportation revolutionized the way people traveled and connected with each other. His ambitious project of the Great Western Railway transformed the railway industry, setting new standards and pushing boundaries.

The completion of the Great Western Railway from London to Bristol in 1841 marked a significant milestone in the history of rail travel. His of a broader gauge, known as the "Great Western Gauge," not only provided stability and comfort but also facilitated faster travel.



## **Legacy and Inspiration for the Generations to Come**

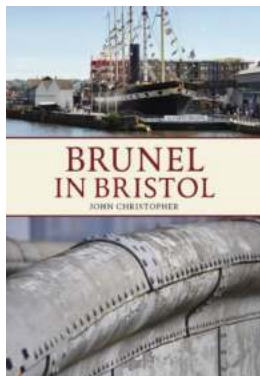
Brunel's legacy lives on, inspiring engineers and architects worldwide. His dedication to pushing the boundaries of what was thought possible and his unyielding commitment to excellence serve as reminders to never settle for mediocrity.

In Bristol, John Christopher Brunel acts as a guardian of his father's legacy, maintaining and preserving his creations. The city continues to celebrate the contributions of Isambard Kingdom Brunel, reminding us all of the incredible impact one person can have on the world.

**In**

Brunel in Bristol John Christopher - these words encapsulate the embodiment of engineering brilliance, innovation, and the relentless pursuit of excellence.

Brunel's contributions continue to shape our world, reminding us of the power of imagination and determination. As we walk across the Clifton Suspension Bridge or admire the majestic Royal Albert Bridge, we are transported back in time to witness the remarkable feats achieved by one man – Isambard Kingdom Brunel.



### **Brunel in Bristol** by John Christopher (Kindle Edition)

★★★★☆ 4.5 out of 5

|                      |             |
|----------------------|-------------|
| Language             | : English   |
| File size            | : 10926 KB  |
| Text-to-Speech       | : Enabled   |
| Screen Reader        | : Supported |
| Enhanced typesetting | : Enabled   |
| Print length         | : 96 pages  |
| Lending              | : Enabled   |



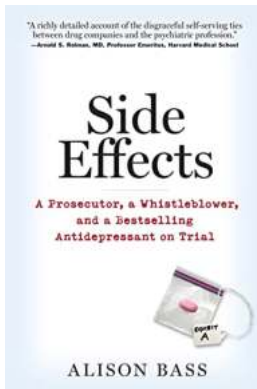
Bristol and Brunel, the two are inseparable. What would the Avon Gorge be without the slender lines of the suspension bridge? The Floating Harbour without the iron-hulled Great Britain back in the dry dock where she was built, or the magnificent Great Western Railway without its Temple Meads station? Quite clearly that most celebrated of Victorian engineers, Isambard Kingdom Brunel - the 'Little Giant' in the stove-pipe hat - has contributed more iconic landmarks to the cityscape than anyone else. And in return Bristolians like to claim Brunel as their own, an 'adopted son' of the city, although it wasn't always an easy relationship. Brunel never lived in Bristol, but the city is home to the richest concentration of his surviving works to be found anywhere; not just the big stuff but also the less well known works including a number of 'other' bridges and at least three railways. John Christopher, an acknowledged expert on Brunel, takes

us on a tour of Bristol, examining the relationship between city and engineer, and exploring his works. This is the latest in a series of books which are all about rediscovering the Brunel on your doorstep.



## Open Architecture For The People: A Revolutionary Approach to Design

As the world rapidly evolves, so does the way we design and build our living spaces. Gone are the days when architecture was exclusively reserved for the wealthy or the...



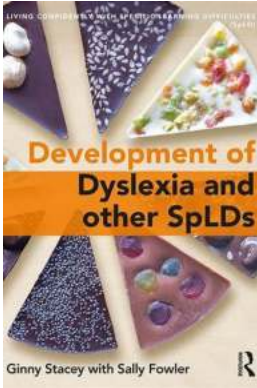
## Prosecutor Whistleblower And Antidepressant On Trial

Prosecutor whistleblower exposes shocking truth about antidepressant drugs in a high-profile trial that has captivated the nation. In recent years, antidepressant...



## The Fascinating Journey of New Drug Discovery and Development

Are you curious about the incredible journey that a new drug takes from its initial discovery in the laboratory to becoming a medication that saves lives? The process of new...



## The Fascinating Journey of Dyslexia and Other Specific Learning Disabilities (SPLDs)

Specific Learning Disabilities, commonly referred to as SPLDs, are a group of disorders that affect a person's ability to read, write, spell, or perform mathematical...



## Practical Acoustic Emission Testing: Unlocking the secrets of structural integrity

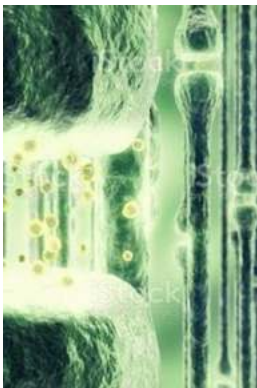
Have you ever wondered what keeps our buildings, bridges, and other structures standing tall and solid? Behind the scenes, engineers and technicians are hard at work ensuring...



## The Unspeakable Darkness: Rape

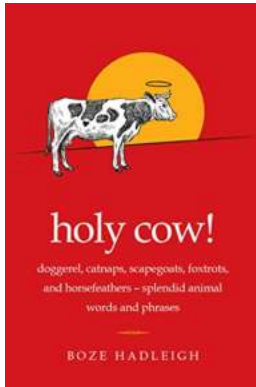
CONTAINS GRAPHIC CONTENT - READER DISCRETION ADVISED

Rape, the mere mention of this word sends shivers down one's spine. It is a topic that demands attention, yet people...



## Revolutionizing Entertainment: The Fascinating World of 3DTV Processing And Transmission Of 3D Video Signals

Imagine being able to step into your favorite movie or game, immersing yourself in a virtual reality...



## **Doggerel Catnaps Scapegoats Foxtrots And Horse Feathers Splendid Animal Words**

When it comes to the English language, it offers a plethora of unique and fascinating words. From onomatopoeic interjections to poetic expressions, animal-related...