

Programme Changes at London Capital FM Attract Younger Audience But Send Older

Gone are the days of radio stations being solely focused on entertaining the older generation. London Capital FM has recently introduced a series of programme changes to cater to a younger demographic. While this move has successfully attracted a younger audience, it has led to mixed reactions among older listeners.

London Capital FM, one of the capital city's most popular radio stations, made a strategic decision to bring in fresh faces and diverse voices to stay relevant in an evolving media landscape. With new hosts and updated show formats, the station hoped to appeal to a wider range of listeners, particularly the younger crowd.

The Impact on Younger Listeners

The changes made by London Capital FM have been met with great enthusiasm among younger listeners. The new shows feature trending music genres, lively discussions on modern topics, and interaction with social media platforms. This approach has successfully resonated with the younger audience, allowing them to stay connected with current trends and feel represented on the airwaves.



Programme Changes At London's 'Capital FM' Attract Younger Audience But Send Older Listeners To 'BBC Radio 1' For Refuge

by Grant Goddard (Kindle Edition)

★★★★★ 5 out of 5

Language : English

File size : 208 KB

Text-to-Speech : Enabled

Screen Reader : Supported

Enhanced typesetting : Enabled

Word Wise : Enabled
Print length : 7 pages
Lending : Enabled



London Capital FM has also gone the extra mile to engage with its younger listeners by hosting on-air contests, exclusive concert giveaways, and even featuring local emerging artists. By embracing a more interactive and immersive experience, the station has managed to build a loyal following of young music enthusiasts and avid radio listeners.

The Concerns of Older Listeners

While the changes at London Capital FM have been well-received by the younger generation, older listeners have expressed their concerns about feeling left behind. With the of new hosts and show formats, there has been a shift in the content and style of the station's programming.

Some older listeners fear that the station is neglecting their taste in music and intellectual discussions in favor of chasing a younger demographic. The familiar voices and familiar content they have grown accustomed to over the years are gradually being phased out, leaving them feeling disconnected from the station they once loved.

Moreover, the older generation argues that London Capital FM's changes neglect the fact that they are also an important part of the listening community. They feel that their interests and perspectives are not adequately represented in the new programming, resulting in a loss of their sense of belonging.

Striking a Balance

The challenge for London Capital FM lies in striking a balance between attracting a younger audience while not alienating the older generation. It is essential for the station to acknowledge the concerns expressed by loyal older listeners.

One possible approach is to create dedicated shows or time slots that cater specifically to the tastes and interests of the older listeners. This way, London Capital FM can maintain its appeal among the younger demographic without disregarding its long-standing audience.

Another potential strategy is to find common ground between the different age groups. By incorporating elements from both the past and the present, the station can create a unique listening experience that appeals to a wider range of listeners.

The Future of London Capital FM

Despite the concerns raised by older listeners, it is crucial for London Capital FM to adapt and evolve to remain competitive and relevant in the ever-changing media landscape. The of programme changes to attract a younger audience was a strategic move that acknowledges the shifting demographics and preferences.

By embracing new voices and fresh perspectives, London Capital FM has managed to successfully connect with the younger generation. However, it is important for the station to address the concerns of its older listeners to maintain a sense of inclusivity and continuity.

London Capital FM has the opportunity to become a powerhouse in the radio industry by striking the right balance between the old and the new. By incorporating diverse voices, music genres, and timely discussions, the station can stay relevant to both the younger and older audience, ensuring a bright future for London Capital FM.



Programme Changes At London's 'Capital FM' Attract Younger Audience But Send Older Listeners To 'BBC Radio 1' For Refuge

by Grant Goddard (Kindle Edition)

★★★★★ 5 out of 5

Language : English
File size : 208 KB
Text-to-Speech : Enabled
Screen Reader : Supported
Enhanced typesetting : Enabled
Word Wise : Enabled
Print length : 7 pages
Lending : Enabled



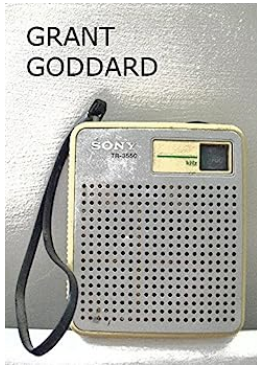
Analysis of the impact of weekday daytime programme changes at London local commercial radio station 'Capital FM' on its ratings amongst 15-24 and 25-34 year old listeners.

[September 1991]



UTV Scottish Media Group Merger Could Revive Commercial Radio Sector Enders

Over the years, the commercial radio sector has experienced numerous challenges and transformations. In an industry dominated by conglomerates and media giants, UTV Scottish...



Options For Radio Broadcasting In The United Kingdom

Radio broadcasting is an integral part of the media landscape in the United Kingdom. It provides entertainment, information, and a platform for diverse voices to...



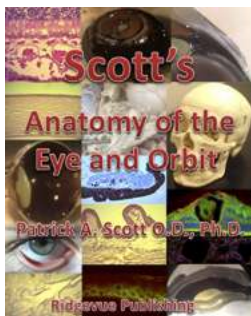
Last.fm is Not the Problem: An Enders Analysis

Music streaming has become an integral part of our lives, offering convenience and an extensive library of songs at our fingertips. When it comes to discovering new music,...



The Rise of The Second National Digital Radio Multiplex: A Game Changer in the Broadcasting Industry

In today's fast-paced digital age, the broadcasting industry is constantly evolving to keep up with consumer demands. One of the latest developments in this arena is the...



Scott Anatomy Of The Eye And Orbit - An In-Depth Look

The human eye is a fascinating and complex organ, allowing us to perceive the world around us. Understanding the anatomy of the eye and its functions is crucial in...



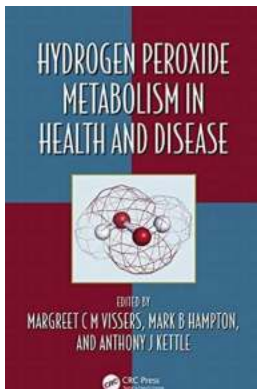
Are PRS and PPL Making Valid Arguments for New Music Copyright Regulations?

Music copyright societies play a vital role in protecting the rights and interests of artists and music creators. In the United Kingdom, two prominent societies - PRS...



Digital Radio UK Explains the State of DAB Digital Radio Switchover

Are you still using traditional analog radio? It's time to switch to digital! The UK is making significant strides in embracing the world of digital radio. The Digital Radio...



Hydrogen Peroxide Metabolism In Health And Disease Oxidative Stress And Disease

Hydrogen peroxide (H_2O_2) is a fascinating molecule that plays crucial roles in both health and disease. It is widely...