

# Sherlock Holmes And The Hilldrop Crescent Mystery: Unraveling the Puzzling Enigma

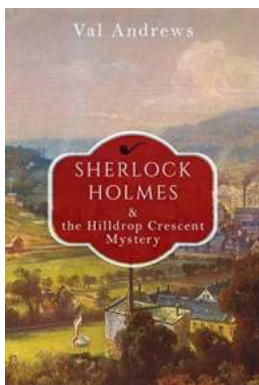
When we think of brilliant detectives, one name immediately springs to mind - Sherlock Holmes. Created by the renowned author Sir Arthur Conan Doyle, Sherlock Holmes has become synonymous with sharp intellect, deductive reasoning, and thrilling mysteries. In this article, we delve into one of his most intriguing cases - The Hilldrop Crescent Mystery, which kept readers on the edge of their seats.

## The Setting: Hilldrop Crescent

The story unfolds in the winding streets of Hilldrop Crescent, a quiet residential area in North London. The inhabitants of this quaint neighborhood were soon to experience a series of events that would defy rational explanation.

## A Mysterious Disappearance

It all began when Mrs. Hudson reported the sudden disappearance of her neighbor, Mrs. Morrison. Mrs. Morrison was a well-liked elderly lady who lived alone in her charming cottage. One evening, she left her house to walk her loyal canine companion, Mr. Watson. However, both she and Mr. Watson vanished without a trace.



## Sherlock Holmes and the Hilldrop Crescent Mystery (The Sherlock Mysteries Book 5)

by Val Andrews (Kindle Edition)

★★★★☆ 4.1 out of 5

Language : English

File size : 4906 KB

Text-to-Speech : Enabled

Screen Reader : Supported

Enhanced typesetting : Enabled  
Word Wise : Enabled  
Print length : 134 pages  
Lending : Enabled



The bizarre nature of the disappearance prompted Mrs. Hudson to seek the assistance of the one man who could unravel this puzzle - the brilliant Sherlock Holmes.

## **The Clues**

Holmes visited Mrs. Morrison's cottage to gather evidence. He identified an overturned plant pot, muddy footprints leading towards the nearby woods, and a broken leash that belonged to Mr. Watson. His incredible powers of observation allowed him to construct a preliminary theory.

As Holmes explored the woods, more clues emerged - a pocket watch hidden beneath a pile of leaves, a half-smoked cigar with an unknown brand, and a small pocketknife with initials engraved on the handle. Each clue added an additional layer of complexity to the already perplexing mystery.

## **Suspects and Alibis**

With the gathering of crucial evidence, Holmes began narrowing down the list of potential suspects in this enigma. The four prime suspects included:

1. Colonel Sebastian Moran - a retired military officer who resided in a nearby estate.
2. Dr. John Watson - Holmes' loyal companion and trusted friend.

3. Nathaniel Crafton - a peculiar artist known to have an affinity for Mrs. Morrison's dog.
4. Inspector Lestrade - an experienced detective from Scotland Yard.

All suspects had alibis for the time of the disappearance, making this case even more complicated than before. Holmes had his work cut out for him, as he delved deeper into each individual's background, motives, and potential connections to Mrs. Morrison.

### **The Twist of Betrayal**

As Holmes meticulously gathered information, a shocking revelation emerged. The initial suspicion surrounding Dr. John Watson turned the investigation on its head. Holmes discovered that Dr. Watson had a hidden motive for Mrs. Morrison's disappearance.

On further examination, it became clear that Dr. Watson had been taking steps to gain access to Mrs. Morrison's estate and her vast fortune. A series of financial troubles had driven him to desperate measures, leading to his involvement in the disappearance. The broken leash and the engraved pocketknife were crucial evidence that pointed towards his culpability.

### **Sherlock Holmes Unveils the Truth**

With the evidence meticulously compiled, Holmes gathered all parties involved for a final confrontation. In a dramatic sequence of events, Holmes revealed Dr. Watson's motives, his calculated actions, and his role in Mrs. Morrison's disappearance.

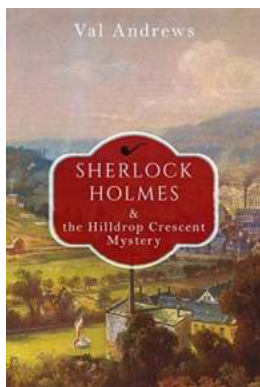
Dr. Watson, unable to withstand the weight of the accusations, confessed to his misdeeds, leading to his swift arrest.

## The Legacy of Sherlock Holmes

The Hilldrop Crescent Mystery stands as a testament to the brilliance of Sherlock Holmes and his unparalleled ability to unravel complex cases. It showcases Holmes' unrivaled powers of deduction and his relentless pursuit of justice.

Even to this day, Sherlock Holmes continues to captivate audiences worldwide. From the original stories penned by Sir Arthur Conan Doyle to modern adaptations in literature and film, the legacy of Sherlock Holmes remains as strong as ever.

So, dear reader, if you ever find yourself in the midst of a perplexing mystery, remember the indomitable spirit of Holmes and his unwavering commitment to solving the unsolvable.



### Sherlock Holmes and the Hilldrop Crescent Mystery (The Sherlock Mysteries Book 5)

by Val Andrews (Kindle Edition)

★★★★☆ 4.1 out of 5

Language : English  
File size : 4906 KB  
Text-to-Speech : Enabled  
Screen Reader : Supported  
Enhanced typesetting : Enabled  
Word Wise : Enabled  
Print length : 134 pages  
Lending : Enabled



The year is 1911 and Sherlock Holmes has long since retired from solving mysteries.

However, it seems the great detective cannot resist the lure of the game for very long. When the Crippen murder case, in which Harvey Crippen is believed to have murdered his wife, Belle Elmore, comes to a brutal end with the hanging of Crippen, Holmes returns to London.

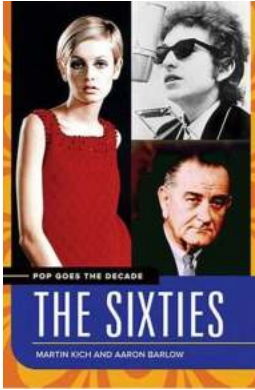
He believes there is more to the story than the papers and the jury found and is determined to get to the bottom of the matter.

The plot thickens as the duo, joined by the also retired Detective Inspector Lestrade, join forces to uncover what really happened in house 39 Hilldrop Crescent. As Watson uncovers more and more clues that corroborate Holmes' belief that Crippen was innocent, Holmes takes it upon himself to investigate the happenings of the local homeless community, where people have been disappearing for months. Though seemingly unrelated, the two intertwine in a shocking turn of events.

From ghosts and cannibals to faked deaths and homeless alcoholics, Sherlock Holmes and the Hilldrop Crescent Mystery carries on the pounding crescendo until the very end.

'Sherlock Holmes and the Hilldrop Crescent Mystery' is a gripping thriller by Val Andrews.

Val Andrews (15 February 1926 – 12 December 2006) was a music hall artist, ventriloquist and writer. Andrews was a prolific writer on magic, having published over 1000 books and booklets from 1952. He also authored Sherlock Holmes pastiches and Houdini's novels.



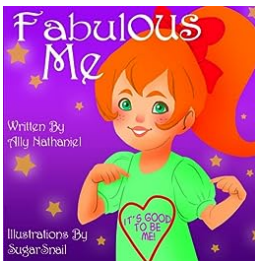
## Pop Goes The Decade: The Sixties – A Decade of Revolution and Transformation

The 1960s, commonly known as "The Sixties," marked a significant turning point in global history. This remarkable era witnessed unprecedented changes in culture, music,...



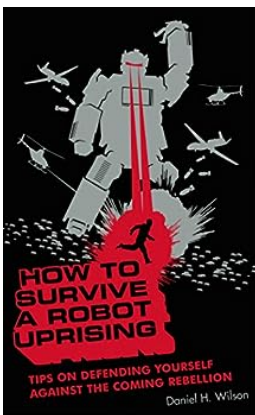
## Guitar Pattern Recognition System - The New Way To Visualize Your Fretboard

In the world of guitar playing, mastering the fretboard can be a daunting task. With so many possible notes and chord shapes, it's easy to get overwhelmed and...



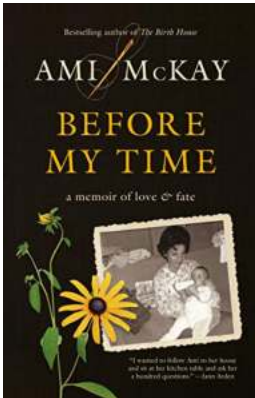
## Unlocking the Power of Imagery: A Revolutionary Approach to Children's Level and Reading Picture

Are you searching for a magical way to empower your little girl with the love for reading and enhance her overall cognitive growth? Look no further! In this article, we will...



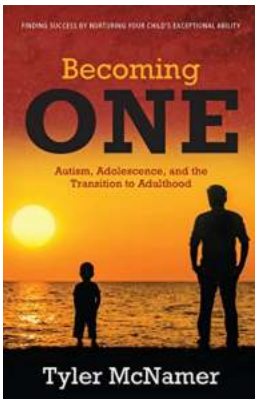
## How To Survive Robot Uprising

Are you prepared to face a robot uprising? As technology continues to advance at an unprecedented rate, it's not far-fetched to imagine a future where robots...



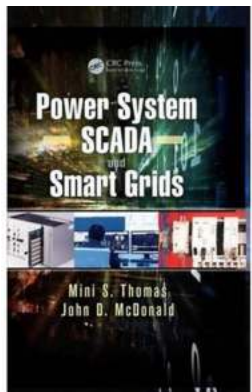
## **Memoir of Love and Fate - A Journey Through Passion and Destiny**

Love, fate, and destiny are intricate threads that weave the fabric of our existence, shaping and guiding us towards profound experiences that define...



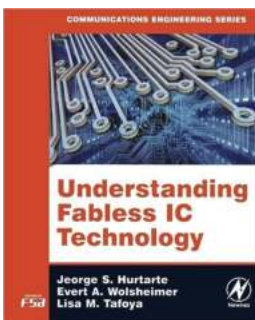
## **Autism Adversity And The Transition To Adulthood: A Journey Towards Embracing Individuality**

Autism is a developmental disorder that affects communication, behavior, and social interaction. It is a lifelong condition that presents unique challenges for individuals...



## **Power System SCADA And Smart Grids: Revolutionizing Energy Management**

Energy is a fundamental requirement for modern societies to thrive. From powering homes and businesses to supporting critical infrastructure, the demand for electricity...



## **Unlocking the Secrets: Understanding Fabless IC Technology in Communications Engineering**

In today's digital age, the world of technology is constantly evolving, paving the way for exciting breakthroughs and innovations. One such advancement is the advent of...

