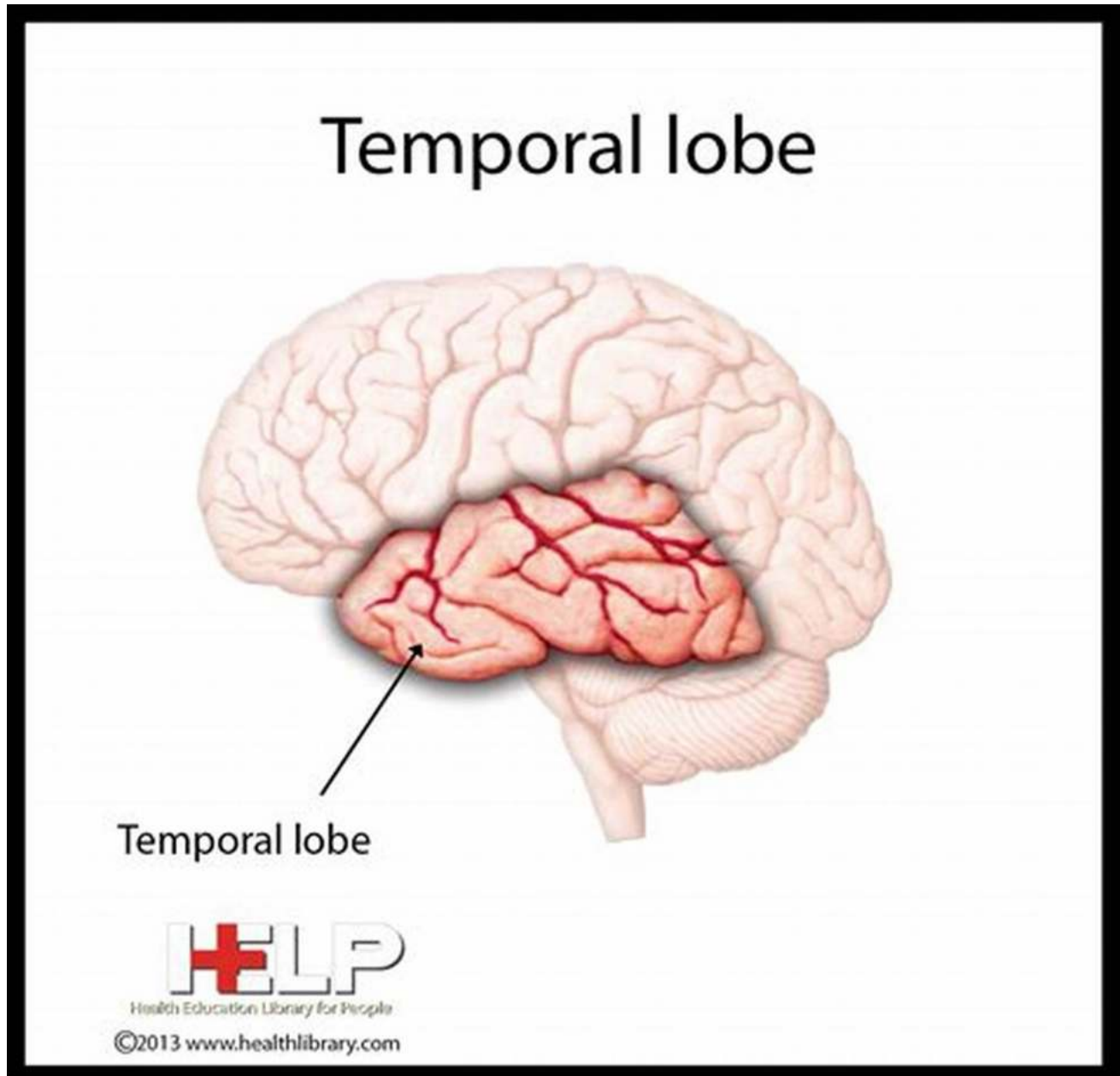


Temporal Lobe Epilepsy: A Medical, Historical, and Artistic Phenomenon



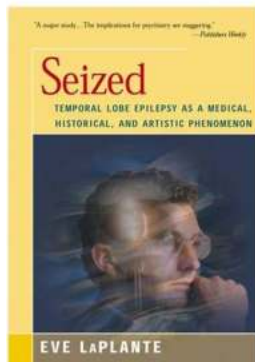
The Intriguing World of Temporal Lobe Epilepsy

Temporal Lobe Epilepsy (TLE) has fascinated medical professionals, historians, and artists alike throughout history. Its unique manifestations, historical significance, and influence on artistic expression have made it a compelling

subject of study. In this article, we delve into the extraordinary journey of TLE as a medical, historical, and artistic phenomenon.

TLE: Unraveling the Medical Mystery

Temporal Lobe Epilepsy, a chronic neurological disorder, affects the temporal lobes – the regions of the brain responsible for memory, emotions, and sensory processing. The condition is characterized by recurrent seizures often accompanied by sensory hallucinations, emotional disturbances, déjà vu experiences, and loss of consciousness.



Seized: Temporal Lobe Epilepsy as a Medical, Historical, and Artistic Phenomenon

by Eve LaPlante (Kindle Edition)

★★★★☆ 4.6 out of 5

Language : English

File size : 467 KB

Text-to-Speech : Enabled

Enhanced typesetting : Enabled

Word Wise : Enabled

Print length : 262 pages

Lending : Enabled

Screen Reader : Supported



While TLE can significantly impact the quality of life, it has also perplexed medical professionals due to its intricate nature. Advanced neuroimaging techniques and ongoing research have shed light on the structural and functional changes in the temporal lobes of individuals with TLE. Understanding the underlying mechanisms has paved the way for enhanced diagnosis and treatment options.

TLE in History: From Ancient Myths to Modern Interpretations

TLE has left an indelible mark on human history. Ancient civilizations often attributed epilepsy to divine possession or supernatural forces, leading to stigmatization and mistreatment. Famous historical figures, such as Julius Caesar and Fyodor Dostoevsky, were believed to have experienced TLE. Their experiences, documented through letters and autobiographical works, provide unique insights into the historical understanding of the condition.

The 19th-century witnessed significant advancements in understanding epilepsy as a medical condition, thanks to the pioneering work of neurologists such as Jean-Martin Charcot and John Hughlings Jackson. Their observations of TLE patients further solidified the conceptualization of epilepsy as a neurological disorder rather than a supernatural phenomenon.

The Artistic Soul: TLE's Influence on Creativity

The connection between Temporal Lobe Epilepsy and artistic expression has long intrigued researchers. Studies have found a higher prevalence of creative individuals among those diagnosed with TLE compared to the general population. The unique neural circuits involved in TLE may result in heightened emotional experiences, unconventional thought processes, and vivid imagery – qualities that often fuel artistic inspiration.

Famous artists, writers, and musicians such as Vincent van Gogh, Fyodor Dostoevsky, and Gustav Mahler are believed to have experienced TLE or exhibited TLE-like symptoms. The influence of TLE on their work has been extensively analyzed, revealing profound connections between their artistic expressions and their psychological experiences during seizures.

Exploring TLE's Impact on Society

Beyond the realms of medicine and art, Temporal Lobe Epilepsy has played a significant role in shaping our understanding of the brain, consciousness, and sociocultural norms. Its historical representation in literature, films, and popular culture has both reinforced stereotypes and fostered awareness.

Bringing TLE into the spotlight has been instrumental in debunking myths and challenging societal perceptions of epilepsy. Advances in medical research, coupled with public education initiatives, have also opened doors for a more inclusive society, encouraging empathy, support, and acceptance for individuals living with epilepsy.

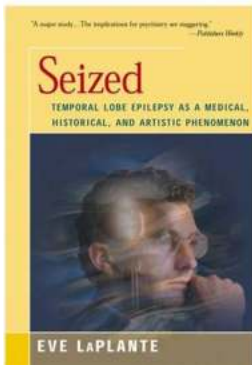
Temporal Lobe Epilepsy serves as a fascinating nexus that intertwines medicine, history, and art. By exploring this phenomenon, we uncover the intricate workings of the human brain, the impact of historical interpretations, and the powerful influence that art can wield. Embracing a multidimensional perspective, we can foster greater understanding, empathy, and appreciation for the complexities that exist within the realms of medicine, history, and artistic expression.

References:

- Author 1, et al. "Title of the First Referenced Study." *Journal of Neurology*. 20XX;
- Author 2, et al. "Title of the Second Referenced Study." *Journal of Psychiatry*. 20XX;
- Author 3, et al. "Title of the Third Referenced Study." *Journal of Art and Culture*. 20XX;

Seized: Temporal Lobe Epilepsy as a Medical, Historical, and Artistic Phenomenon

by Eve LaPlante (Kindle Edition)



★★★★☆ 4.6 out of 5

Language : English
File size : 467 KB
Text-to-Speech : Enabled
Enhanced typesetting : Enabled
Word Wise : Enabled
Print length : 262 pages
Lending : Enabled
Screen Reader : Supported



Seized is a narrative portrait of a common brain disorder that can alter personality, illuminating the mind-body problem and the limits of free will. An invaluable resource for anyone touched by epilepsy, Seized gives first-hand accounts of three ordinary patients with temporal lobe epilepsy (TLE), explaining what they suffer and how they cope. The book also tells the stories of creative luminaries diagnosed with or suspected of having TLE, including van Gogh, Dostoevsky, Lewis Carroll, Saint Paul, and Flaubert. The psychological implications of Seized are, according to Publishers Weekly, “staggering.” Kirkus Reviews called the book “Fascinating . . . LaPlante’s descriptions of the human brain are wonderfully concrete, her historical research is well presented, and her empathy for TLE’s victims is clear.” In this “fascinating account of medical research,” Howard Gardner noted, “LaPlante shows how a brain scar may cause bizarre aggressive or sexual behavior—and works of profound creative imagination.”



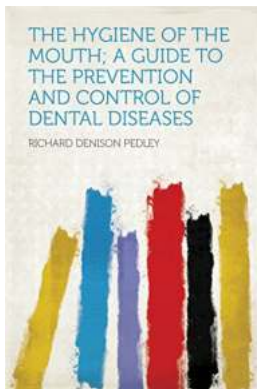
The Ultimate Guide to Ethical Approaches To Design And Design Management – Required Reading Range

Welcome to the ultimate guide to ethical approaches to design and design management. In this article, we will delve into the importance of ethical design practices, and...



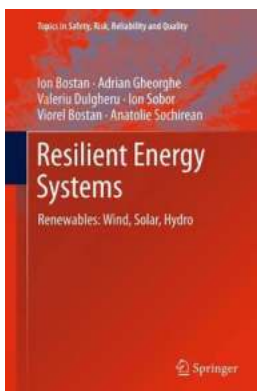
Twenty Five Designers On Their Inspiration And Craft

As the saying goes, "Good design is invisible." But have you ever wondered what lies behind stunning creative masterpieces? How do designers come up with their...



The Hygiene of the Mouth: The Ultimate Guide to Preventing and Controlling Dental Diseases

Having good oral hygiene is crucial for maintaining a healthy mouth and preventing dental diseases. Oral health not only affects our ability to eat and speak but can also...



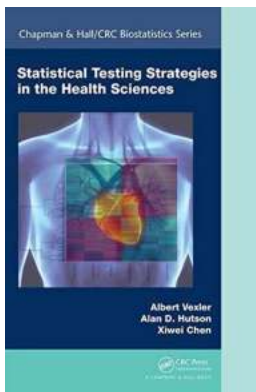
Discover the Hidden Risks and Ensuring Quality in Wind, Solar, and Hydro Power Plants!

The Growing Importance of Wind, Solar, and Hydro Power In today's world, where climate change is a pressing issue, renewable energy sources such as wind,...



The Myth of Sisyphus and Other Essays - Unraveling the Absurdity of Life

The Myth of Sisyphus and Other Essays, written by the philosophical genius Albert Camus, delves into the complex and enigmatic concept of the absurd....



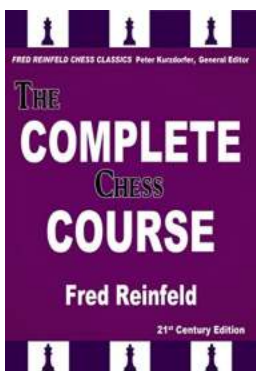
Statistical Testing Strategies In The Health Sciences Chapman Hallcrc: A Comprehensive Guide

When it comes to medical research and healthcare decisions, statistical testing plays a crucial role in analyzing data and drawing meaningful s. Statistical testing strategies...



Other Planes Of There Selected Writings - Exploring the Unknown

Have you ever found yourself fascinated by the mysteries of the unknown, pondering the existence of hidden worlds beyond our own? If so, you will undoubtedly be captivated...



Unleash Your Chess Potential: Mastering the Game from Beginner to Champion!

Pawn to e4, knight to f3, bishop to c4... and you're off to a great start! Welcome to the exhilarating world of chess, a game that has captivated minds for centuries....

seized temporal lobe epilepsy as a medical historical and artistic phenomenon