

The Comprehensive Guide to Understanding the Characteristics of Social Policy

Do you ever wonder how governments develop policies to address social issues and ensure the welfare of their citizens? Social policy plays a crucial role in shaping societies and promoting social justice. In this article, we will explore the characteristics of social policy and uncover its importance in today's world.

1. Goals and Objectives

Social policy is defined as a set of guidelines and actions that a government undertakes to promote social well-being and address inequality. Its primary goal is to improve the quality of life for all citizens and ensure equal access to basic necessities, resources, and opportunities.

These policies aim to reduce poverty, provide healthcare services, enhance educational opportunities, protect vulnerable groups, and create a fair and just society. By setting specific goals and objectives, social policy helps governments track their progress and measure the impact of their initiatives.

Characteristic	Prison population	General population
White	54%	2%
Black or mixed race	29%	23%
Asian	11%	7%
Hispanic	4%	14%
Other	2%	5%
Male	95%	98%
Female	5%	2%
Under 18	1%	1%
18-24	12%	15%
25-34	18%	18%
35-44	22%	18%
45-54	25%	18%
55-64	22%	18%
65+	18%	18%
Married	15%	45%
Single	45%	45%
Divorced	25%	15%
Widowed	15%	15%
Never married	15%	15%
Married	15%	15%
Divorced	15%	15%
Widowed	15%	15%
Never married	15%	15%

Characteristics Of Social Policy: Importance Of

Prisons In Society by Jesper Jarl Fanø (Kindle Edition)

★★★★★ 5 out of 5

- Language : English
- File size : 750 KB
- Text-to-Speech : Enabled
- Screen Reader : Supported
- Enhanced typesetting : Enabled
- Word Wise : Enabled
- Print length : 407 pages
- Lending : Enabled



2. Evidence-Based Decision Making

Social policy is backed by thorough research, data analysis, and evidence-based decision making. Governments rely on social scientists, researchers, and policy analysts to gather and analyze data related to various social issues.

By understanding the root causes of problems like inequality, unemployment, or inadequate healthcare, policymakers can develop effective strategies to address these issues. Evidence-based decision making ensures that resources are allocated efficiently and interventions are targeted towards those who need them the most.

3. Interdisciplinary Approach

Social policy combines insights and expertise from various disciplines like sociology, economics, political science, psychology, and public health. It recognizes that social issues are complex and interconnected, requiring comprehensive solutions that go beyond a single disciplinary approach.

For example, addressing homelessness requires not only providing immediate shelter but also tackling the underlying causes such as unemployment, addiction, mental health, and affordable housing. An interdisciplinary approach allows policymakers to consider all aspects and design comprehensive policies that create lasting impacts.

4. Collaboration and Stakeholder Involvement

Social policy involves collaboration among different stakeholders, including government agencies, non-profit organizations, community groups, and citizens.

Recognizing that no single entity can solve social issues in isolation, social policy promotes partnerships and collective action.

By involving relevant stakeholders in policy development and implementation, policymakers gain a deeper understanding of the challenges at hand and the potential solutions. Collaborative efforts ensure that policies are comprehensive, inclusive, and reflective of the diverse needs and perspectives of the population.

5. Monitoring and Evaluation

Social policy is an ongoing process that requires constant monitoring and evaluation. Governments regularly assess the effectiveness of their policies and make necessary adjustments to achieve the desired outcomes.

Monitoring and evaluation help policymakers identify gaps in service delivery, measure the impact of interventions, and identify areas that require further attention. By gauging the success or failure of social policies, governments can make informed decisions and adapt their strategies based on evidence.

6. Long-Term Vision

Social policy takes a long-term perspective by recognizing that sustainable change requires a comprehensive vision and planning. It aims to create not just short-term fixes, but long-lasting solutions that transform individuals, communities, and society as a whole.

Understanding the root causes of social problems and investing in preventive measures can help minimize the need for crisis-driven interventions. By addressing underlying factors like education, poverty, and inequality, social policy contributes to a more equitable and prosperous future.

7. Flexibility and Adaptability

Social policies need to be flexible and adaptable to the dynamic nature of society. As societies evolve and new challenges arise, social policy must evolve too. Governments need to be responsive to emerging social issues and adapt their policies to address them effectively.

For instance, the recent COVID-19 pandemic highlighted the need for flexible social policies that can quickly respond to unforeseen circumstances. Policies like income support, healthcare provisions, and remote education were quickly implemented to mitigate the effects of the crisis.

Social policy plays a vital role in shaping societies and ensuring the well-being of citizens. By understanding the characteristics of social policy, we can appreciate its importance and advocate for policies that promote a fair, just, and inclusive society.

With goals and objectives, evidence-based decision making, an interdisciplinary approach, collaboration and stakeholder involvement, monitoring and evaluation, a long-term vision, and flexibility, social policy can address social issues effectively and create lasting positive change.

So, let's continue working towards creating and implementing social policies that uplift individuals, empower communities, and build a better future for all.

Characteristic	Prison population	General population
White	54% (51% for women, 57% for men)	7%
Black or mixed race	29% (32% for women, 27% for men)	20%
Asian	4%	14%
Other	13%	8.2% (England and Wales)
Married	42% (32% for women, 49% for men)	1% (20% of who permanently exclude)
Single	47%	18% of working age
Divorced	8%	7.7% of the economic population are unemployed
Widowed	13%	3.8%
Never married	15%	4% have been twice temporarily unemployed
Under 16	54%	Approximately 27% of population
16-17	18%	4%
18-24	16% (23% for women, 13% for men)	6%
25-34	23%	18%
35-44	14% (for women, 23% for men)	18%
45-54	4%	6%
55-64	8%	18%
65+	22%	18% of men and 10% of women reported driving on every day in the four countries

Characteristics Of Social Policy: Importance Of

Prisons In Society by Jesper Jarl Fanø (Kindle Edition)

★★★★★ 5 out of 5

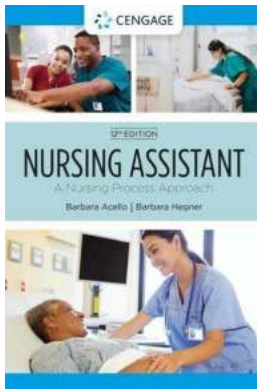
- Language : English
- File size : 750 KB
- Text-to-Speech : Enabled
- Screen Reader : Supported
- Enhanced typesetting : Enabled
- Word Wise : Enabled
- Print length : 407 pages

Lending

: Enabled

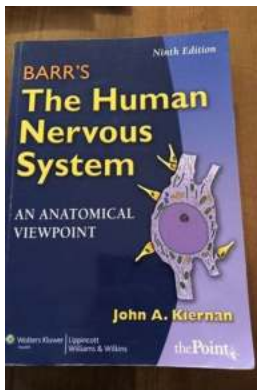


The book tells the story of the main character in prison. The author's story is based on real life. The author describes in detail what prison life is really like, what conditions the prisoners go through, what cultures prevail and how.



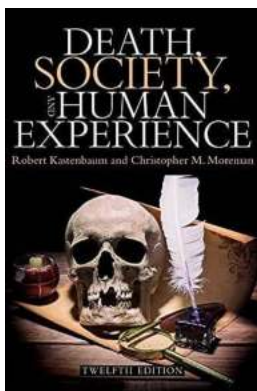
Nursing Process Approach Mindtap Course List: A Comprehensive Guide to Enhance Your Nursing Skills

Are you a nursing student or a healthcare professional looking to enhance your nursing skills and streamline your workflow? Look no further than the Nursing Process Approach...



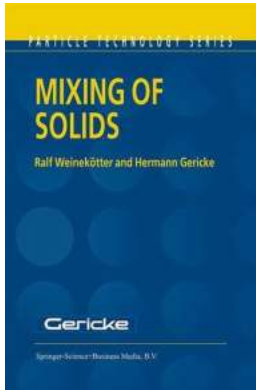
The Astonishing World of Barr: Unveiling the Wonders of the Human Nervous System

Welcome to the fascinating world of Barr, where remarkable discoveries and wonders unravel in the intricate network of the human nervous system. Prepare yourself for a...



Exploring Death: Society and the Human Experience

Death, an inevitable and universally experienced phenomenon, holds a mysterious grip over human existence. Throughout history, societies have grappled with its...



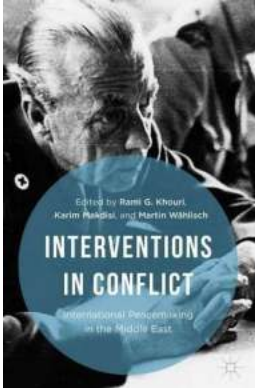
Enhancing Efficiency and Performance in Mixing of Solids Particle Technology 12

Are you looking to improve your understanding of mixing solids particle technology 12? In this article, we will explore the fascinating world of mixing solid...



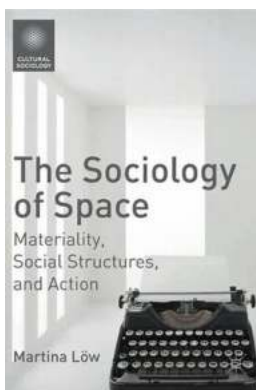
Robotics Vision And Control: Unleashing the Future

Robotics Vision and Control is a field that combines cutting-edge technology and AI algorithms, paving the way for the future of automation. This fascinating area of...



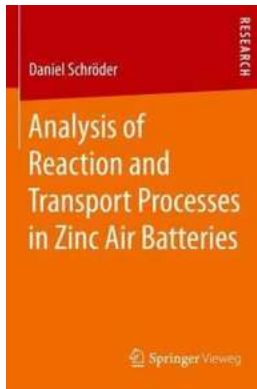
International Peacemaking In The Middle East: A Journey Towards Harmonious Coexistence

For decades, the Middle East has been synonymous with conflict and unrest. However, amidst the chaos and violence, there have been persistent efforts made by...



Materiality, Social Structures And Action: The Unveiling of Cultural Sociology

When it comes to understanding society, a multitude of factors come into play, such as cultural norms, social structures, and individual actions. In the realm of...



Unveiling the Secrets: In-Depth Analysis of Reaction and Transport Processes in Zinc Air Batteries

Zinc air batteries have emerged as one of the most promising energy storage solutions in recent years. Their high energy density, cost-effectiveness, and eco-friendliness...

[characteristics of social policy pdf](#)

[characteristics of social policy ppt](#)

[characteristics of social policy slideshare](#)

[characteristics of social policy analysis](#)

[features of social policy pdf](#)

[features of social policy and administration](#)

[characteristics of social welfare policy](#)

[characteristics of good social policy](#)

[key features of social policy](#)