

The Extreme Caro Kann Attacking Black With F3

The Caro Kann Defense is a popular opening choice for black against 1.e4. It is a solid and reliable defense that often leads to strategic and positional battles.

However, in recent years, a more aggressive approach has emerged in the Caro Kann Defense, known as the Extreme Caro Kann, where white plays 3.f3, targeting black's central pawn on d5. This move aims to disrupt black's development and create immediate attacking chances.

The idea behind 3.f3 is to create a strong pawn center with the possibility of launching a later kingside attack. By challenging black's pawn on d5, white aims to gain control over the center and dictate the pace of the game. This move is considered a sharp and aggressive response, deviating from the traditional Caro Kann setup.

After 3.f3, black has several options to consider. One common continuation is 3...c5, aiming to challenge white's center immediately. This move allows black to open up the position and counter white's aggressive intentions. Another possibility is 3...e5, which aims to challenge white's pawn center directly. This move aims to create imbalances in the position and force white into unfamiliar territory early in the game.



The Extreme Caro-Kann: Attacking Black with 3.f3

by Alexey Bezgodov (Kindle Edition)

★★★★☆ 4.1 out of 5

Language : English

File size : 21414 KB

Text-to-Speech : Enabled

Screen Reader : Supported



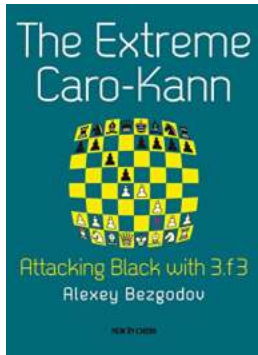
White's most aggressive continuation after 3.f3 is 4.e4, aiming to open up the position and create tactical opportunities. This move can lead to sharp and complex positions, where precise calculation and tactical awareness are crucial for both sides. Black should be ready to defend against white's attacking intentions and exploit any weaknesses in white's pawn structure.

One attractive feature of the Extreme Caro Kann is the element of surprise. Many black players are not familiar with this aggressive approach, and white can use this to their advantage. By deviating from the main lines of the Caro Kann Defense, white aims to put black on the backfoot and force them into unfamiliar territory.

However, the Extreme Caro Kann also carries its own risks. Since it is a sharp and aggressive opening, one misstep can lead to serious consequences. Black can exploit weaknesses in white's position and launch counterattacks, taking advantage of the pawn weaknesses created by white's aggressive pawn advances. Therefore, accurate calculation and tactical awareness are crucial for both sides.

In , the Extreme Caro Kann offers an aggressive and dynamic alternative to the traditional Caro Kann Defense. By playing 3.f3, white aims to disrupt black's development and create immediate attacking chances. However, black has various options to counter white's aggressive intentions and create imbalances in the position. Both sides should be prepared for tactical battles and constantly

evaluate the dynamic nature of the position. The Extreme Caro Kann adds excitement and unpredictability to the Caro Kann Defense, making it an interesting choice for players looking for new challenges on the board.



The Extreme Caro-Kann: Attacking Black with 3.f3

by Alexey Bezgodov (Kindle Edition)

★★★★☆ 4.1 out of 5

Language : English

File size : 21414 KB

Text-to-Speech : Enabled

Screen Reader : Supported

Enhanced typesetting : Enabled

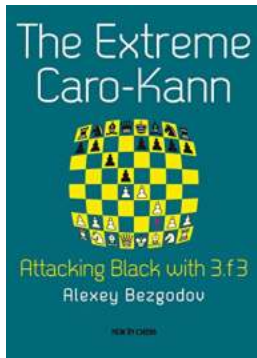
Print length : 272 pages



Alexey Bezgodov presents an unusual idea for White against the ever popular Caro-Kann Defence. The Russian Grandmaster and chess opening expert advocates a very early deviation, the annoying and little explored 3.f3!?

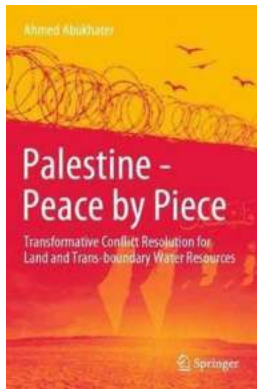
This move may look unimpressive at first sight, but it considerably complicates life for Caro-Kann players, as it makes Black's main problem bigger: the development of his bishop on c8. Small wonder that an increasing number of strong grandmasters, such as Vassily Ivanchuk, Alexander Morozevich and Judit Polgar, have incorporated this move in their repertoire.

After 3.f3!? the bishop on c8 has nowhere to go, and Black will often struggle to avoid enduring problems. White's chances to obtain an advantage are substantial, as Bezgodov shows in this fascinating new chapter in modern chess opening theory, packed with original analysis and clear explanations.



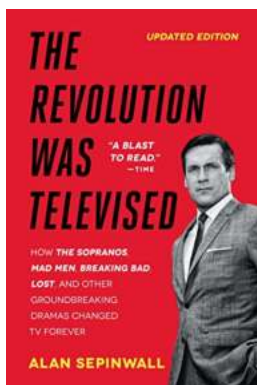
The Extreme Caro Kann Attacking Black With F3

The Caro Kann Defense is a popular opening choice for black against 1.e4. It is a solid and reliable defense that often leads to strategic and positional battles. However,...



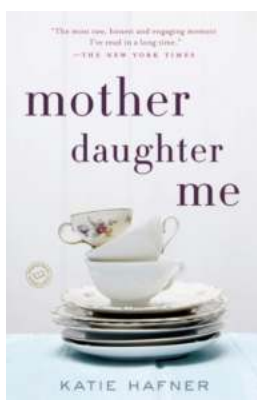
Transformative Conflict Resolution For Land And Trans Boundary Water Resources

Conflicts over land and transboundary water resources are not uncommon in today's world. As populations grow and competition for these valuable resources increases,...



The Revolution Was Televised: Exploring the Golden Age of Television

Long gone are the days when television was just a simple source of mindless entertainment. Over the past few decades, television has undergone a significant transformation,...



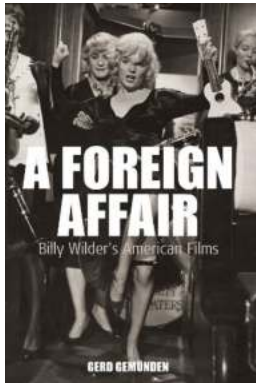
The Dark Secrets and Unspoken Truths: The Complicated Journey of Mother Daughter Relationships

Every mother-daughter relationship is unique, filled with love, joy, and occasionally, challenges. In the memoir "Mother Daughter Me," the author explores a deeply...



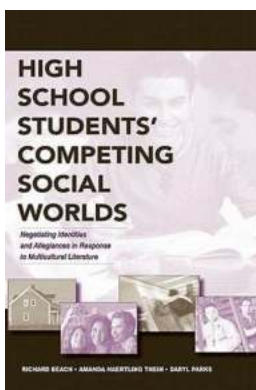
The Extreme Caro Kann Attacking Black With F3

The Caro Kann Defense is a popular opening choice for black against 1.e4. It is a solid and reliable defense that often leads to strategic and positional battles. However,...



Billy Wilder: An Unforgettable Journey Through American Films and Film Europa

Have you ever wondered what it takes to become an iconic figure in the world of filmmaking? Billy Wilder, the Austrian-born American filmmaker, screenwriter, and...



Navigating the Social Challenges of High School: Competing Worlds

In high school, students not only face academic challenges but also navigate through complex social dynamics. The social world of high school can be intense, with teenagers...



The Ultimate Handbook of Computational Social Science Volume: Unlocking Insights into Human Behavior

Computational Social Science (CSS) has emerged as a powerful interdisciplinary field combining social science theories, methods, and computational tools to study and...

