

# **The MMPI MMPI RF Fourth Edition: Unveiling the Science Behind Psychological Assessment**

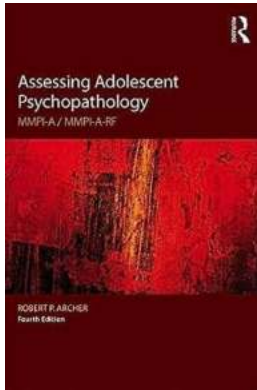
Psychological assessments play a crucial role in understanding an individual's personality traits, mental health concerns, and behavioral patterns. Among the various assessment tools available, the MMPI (Minnesota Multiphasic Personality Inventory) and its revised edition, the MMPI RF, hold a prominent position. In this article, we will dive deep into the MMPI MMPI RF Fourth Edition, exploring its significance, key features, and how it has evolved over time in aiding mental healthcare professionals in their diagnostic processes.

## **The Origins and Evolution of the MMPI**

Created in the 1930s by Drs. Stark Hathaway and J.C. McKinley, the MMPI was initially designed to identify psychological disorders in psychiatric patients. Over time, it gained recognition as a comprehensive personality assessment tool, aiding in the identification of mental health disorders, personality traits, and behavioral tendencies. As the field of psychology progressed, so did the MMPI, leading to the development of its revised edition, the MMPI RF Fourth Edition.

The MMPI RF Fourth Edition represents years of research and refinement, building upon the strengths of its predecessors. This edition encompasses a robust set of psychological scales, questionnaires, and additional measures that enable mental health professionals to gain deep insights into an individual's psychological profile.

**Assessing Adolescent Psychopathology: MMPI-A /  
MMPI-A-RF, Fourth Edition**



by Robert P. Archer (4th Edition, Kindle Edition)

★★★★☆ 4.7 out of 5

Language : English  
File size : 12280 KB  
Text-to-Speech : Enabled  
Screen Reader : Supported  
Enhanced typesetting : Enabled  
Word Wise : Enabled  
Print length : 468 pages



## Key Features of the MMPI RF Fourth Edition

The MMPI RF Fourth Edition incorporates advanced psychometric principles and empirically supported classification systems, empowering practitioners to make more accurate diagnoses and treatment decisions. Here are some notable features of this latest edition:

- **Expanded Normative Sample:** The MMPI RF Fourth Edition draws from a diverse normative sample, ensuring that the test results represent a broad spectrum of individuals.
- **Psychopathology-Specific Scales:** The assessment includes specific scales designed to measure various psychopathological constructs, providing insights into specific disorders such as depression, anxiety, schizophrenia, and more.
- **Validity Scales:** The MMPI RF Fourth Edition incorporates validity scales to detect response styles, providing practitioners with information regarding an individual's response patterns, such as defensiveness, faking, or symptom exaggeration.

- **Multidimensional Assessments:** This edition offers a comprehensive overview of an individual's psychological functioning by incorporating multiple assessment measures to evaluate various dimensions of personality and psychopathology.

## **Enhancing Diagnostics and Treatment**

The MMPI RF Fourth Edition is widely used in clinical settings, helping mental health professionals understand and assess different mental health conditions accurately. By analyzing an individual's results, practitioners can derive insights into their emotional, behavioral, and cognitive functioning.

Furthermore, the MMPI RF Fourth Edition's ability to differentiate between various disorders enables practitioners to formulate precise treatment plans, tailoring interventions to address the unique needs of each individual. It aids in identifying comorbidities, clarifying diagnosis uncertainties, and facilitating more personalized patient care.

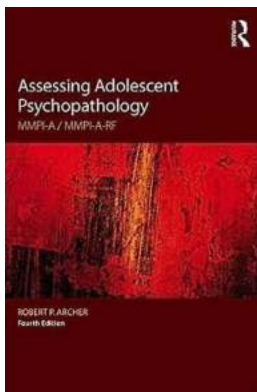
## **Criticisms and Limitations**

Like any comprehensive psychological assessment tool, the MMPI RF Fourth Edition is not without its criticisms and limitations. Some argue that it may not adequately capture cultural or ethnic differences, potentially leading to biased results. However, efforts have been made to address this concern through revisions and updates.

It is essential to interpret the MMPI RF Fourth Edition results within the context of a broader clinical assessment and to consider other relevant information about the individual being assessed. Collaboration and communication between mental health professionals and the individuals taking the test are crucial to ensure accurate interpretations and results.

The MMPI MMPI RF Fourth Edition represents a significant advancement in psychological assessment, aiding mental health professionals in making informed diagnoses and treatment decisions. Its comprehensive nature, psychopathology-specific scales, and multidimensional assessments provide deep insights into an individual's psychological functioning, leading to better-tailored interventions and improved patient outcomes.

Despite its limitations and the need for careful interpretation, the MMPI RF Fourth Edition continues to be a valuable tool in the field of mental health, assisting psychologists, psychiatrists, and therapists in gaining a comprehensive understanding of their patients' psychological profiles.



## Assessing Adolescent Psychopathology: MMPI-A / MMPI-A-RF, Fourth Edition

by Robert P. Archer (4th Edition, Kindle Edition)

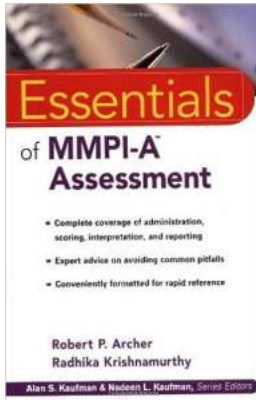
★★★★☆ 4.7 out of 5

Language	: English
File size	: 12280 KB
Text-to-Speech	: Enabled
Screen Reader	: Supported
Enhanced typesetting	: Enabled
Word Wise	: Enabled
Print length	: 468 pages



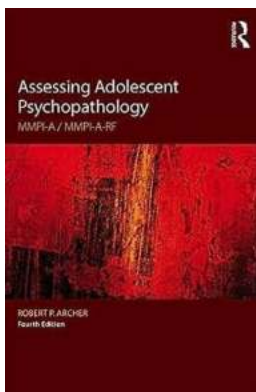
Assessing Adolescent Psychopathology: MMPI-A / MMPI-A-RF, Fourth Edition provides updated recommendations for researchers and clinicians concerning the MMPI-A, the most widely used objective personality test with adolescents, and also introduces the MMPI-A-Restructured Form (MMPI-A-RF), the newest form of the MMPI for use with adolescents. Further, this fourth edition

includes comprehensive information on both MMPI forms for adolescents, including descriptions of the development, structure, and interpretive approaches to the MMPI-A and the MMPI-A-RF. This text provides extensive clinical case examples of the interpretation of both tests, including samples of computer based test package output, and identifies important areas of similarities and differences between these two important tests of adolescent psychopathology.



## **The Essentials of MMPI Assessment: Understanding Psychological Assessment**

Psychological assessment plays a fundamental role in understanding individuals' unique personalities, motivations, and possible mental health conditions. One of the most...



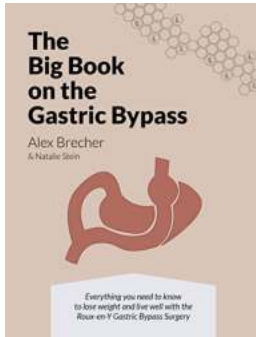
## **The MMPI MMPI RF Fourth Edition: Unveiling the Science Behind Psychological Assessment**

Psychological assessments play a crucial role in understanding an individual's personality traits, mental health concerns, and behavioral patterns. Among the various...



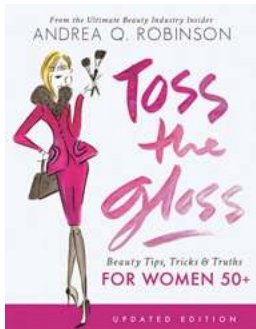
## **The Little Drummer Girl Alexandrov: A Gripping Tale of Espionage and Betrayal**

In the world of spy novels and thrilling espionage stories, "The Little Drummer Girl Alexandrov" stands out as a captivating tale that keeps readers on the edge of their...



## Everything You Need To Lose Weight And Live Well With The Roux En Gastric

Are you tired of trying countless diets and exercise regimens without achieving the weight loss results you desire? It's time to consider a proven solution that has helped...



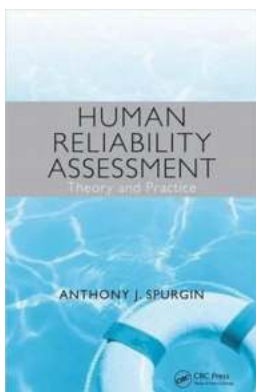
## Beauty Tips Tricks Truths For Women 50

As women age, their beauty routine may need some adjustments to suit their changing needs. With the right tips, tricks, and truths, women over 50 can still look and feel...



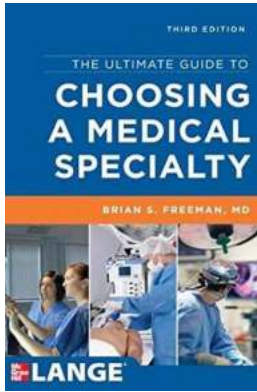
## How To Boost Your Productivity, Explode Your Energy, and Create an Extraordinary Life

Feeling overwhelmed and unproductive? Struggling to maintain your energy levels throughout the day? It's time to make a change and take control of your life. In this article,...



## Unlocking the Secrets of Human Reliability Assessment

Have you ever wondered why humans sometimes make mistakes, leading to accidents or failures in complex systems? Or, have you ever pondered the methods used to...



## The Ultimate Guide To Choosing Medical Specialty Third Edition

Are you a medical student or a young doctor in search of the perfect medical specialty? Choosing a medical specialty is a decision that will shape your entire...

mmpi-a assessing adolescent psychopathology robert archer