

Unveiling the Menace: Multiple Myeloma And Other Plasma Cell Neoplasms Hematologic Malignancies

Did you know that multiple myeloma, a cancer formed by malignant plasma cells, is the second most common hematologic malignancy? This silent and treacherous culprit accounts for approximately 10% of all blood cancers globally. Join us on an eye-opening journey as we unravel the mysteries of multiple myeloma and its counterparts in the realm of hematologic malignancies.

Understanding Multiple Myeloma

Multiple myeloma, also known as Kahler's disease, is characterized by the uncontrolled proliferation of malignant plasma cells within the bone marrow. These abnormal plasma cells produce excessive amounts of monoclonal immunoglobulins, leading to the overcrowding of healthy cells and impairing the production of other crucial blood components.

This condition primarily affects individuals over the age of 65, with men being slightly more predisposed than women. The exact cause of multiple myeloma remains unknown, but certain risk factors such as genetic predisposition, exposure to radiation or toxic chemicals, and certain infections have been linked to its development.

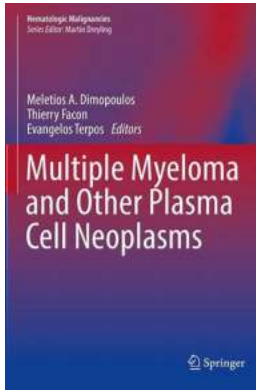
Multiple Myeloma and Other Plasma Cell Neoplasms (Hematologic Malignancies Book 0)

by Joseph D. Zuckerman (1st ed. 2018 Edition, Kindle Edition)

★★★★★ 5 out of 5

Language : English

File size : 2326 KB



Text-to-Speech : Enabled
Enhanced typesetting : Enabled
Print length : 642 pages
Screen Reader : Supported



Early symptoms of multiple myeloma are often nonspecific, making it challenging to diagnose during the initial stages. Patients may experience bone pain, recurrent infections, fatigue, anemia, kidney dysfunction, and unexplained weight loss. Due to its elusive nature, the disease often goes undetected until it reaches an advanced stage.

Innovations in diagnostic techniques have facilitated early detection, allowing for improved treatment outcomes. Imaging tests, blood tests, and bone marrow biopsies are commonly used to confirm the presence of multiple myeloma.

Tackling Plasma Cell Neoplasms Hematologic Malignancies

Multiple myeloma falls under the broader classification of plasma cell neoplasms, which encompasses various hematologic malignancies characterized by the clonal proliferation of abnormal plasma cells.

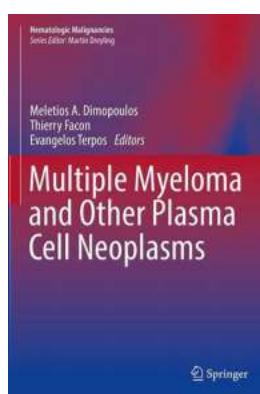
One such condition is solitary plasmacytoma, a localized form of plasma cell neoplasm. Unlike multiple myeloma, solitary plasmacytoma primarily affects a single site, most commonly bone or soft tissue. It is crucial to identify this condition promptly as it has the potential to progress to multiple myeloma.

Waldenstrom macroglobulinemia, another member of the plasma cell neoplasms family, is a rare form of B-cell lymphoma. It is marked by the overproduction of monoclonal immunoglobulin M (IgM) antibodies, leading to the thickening of blood and impairing its flow. Although rare, this condition can greatly impact a person's quality of life and requires meticulous management.

Effective management of plasma cell neoplasms hematologic malignancies relies on a multidisciplinary approach that includes targeted therapies, stem cell transplantation, radiation therapy, and supportive care. Continuous advancements in treatment options have increased the survival rates and quality of life for patients battling these hematologic malignancies.

Multiple myeloma and other plasma cell neoplasms hematologic malignancies pose significant challenges to individuals afflicted by them. These treacherous diseases demand comprehensive understanding, early detection, and innovative treatment strategies.

As medical research progresses, we must continue to raise awareness and support efforts aimed at improving the lives of patients affected by these hematologic malignancies. By doing so, we pave the way for a brighter future where these medical conditions can be effectively managed and ultimately overcome.



Multiple Myeloma and Other Plasma Cell Neoplasms (Hematologic Malignancies Book 0)

by Joseph D. Zuckerman (1st ed. 2018 Edition, Kindle Edition)

★★★★★ 5 out of 5

Language : English

File size : 2326 KB

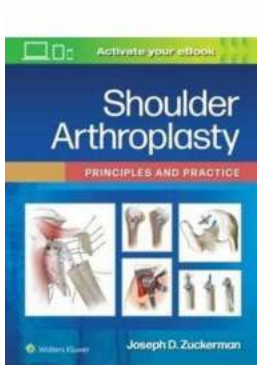
Text-to-Speech : Enabled

Enhanced typesetting : Enabled

Print length : 642 pages

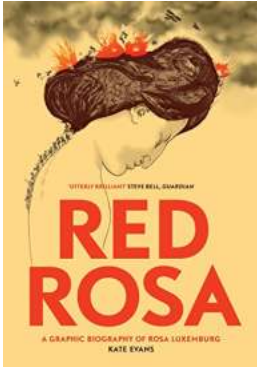


This book is a comprehensive source of up-to-date information on plasma cell neoplasms. Key features include the provision of new criteria for the diagnosis of symptomatic multiple myeloma requiring treatment and the description of novel therapies for myeloma and other plasma cell neoplasms that have only very recently been licensed by the U.S. Food and Drug Administration. Examples include lenalidomide as first-line therapy, panobinostat in combination with bortezomib plus dexamethasone for relapsed/refractory myeloma, ibrutinib for Waldenström's macroglobulinemia, and new therapeutic regimens for systemic amyloidosis and POEMS syndrome. Information is also provided on drug combinations that have shown encouraging results and are very near to approval. Other important aspects covered in the book are the role of different imaging modalities in workup and the significance of newly acquired data relating to prognosis and minimal residual disease. Readers will find Multiple Myeloma and Other Plasma Cell Neoplasms to be a rich source of knowledge that will be invaluable in improving patient management.



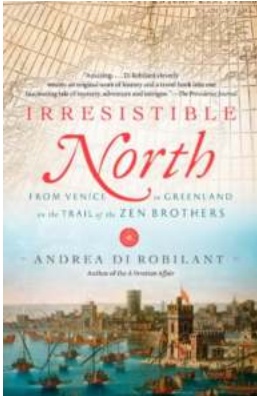
Unlocking the Secrets of Shoulder Arthroplasty: Principles and Practice

The Journey to Pain-Free Shoulders Shoulder pain can be debilitating, affecting everyday activities and diminishing the quality of life. For those who have tried...



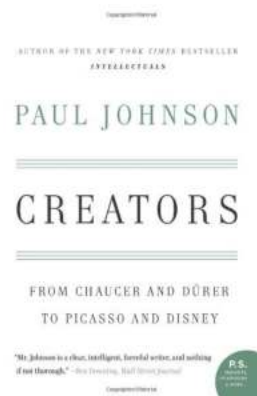
The Captivating Story of Red Rosa Graphic Biography of Rosa Luxemburg

Red Rosa: A Graphic Biography of Rosa Luxemburg is a masterfully crafted comic book that takes readers on a captivating journey through the life of one of history's most...



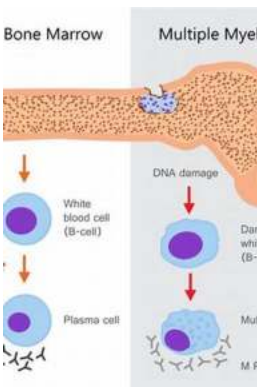
From Venice To Greenland On The Trail Of The Zen Brothers

Have you ever wondered what it would be like to embark on an extraordinary journey from Venice to Greenland, all while following the trail of the enigmatic Zen...



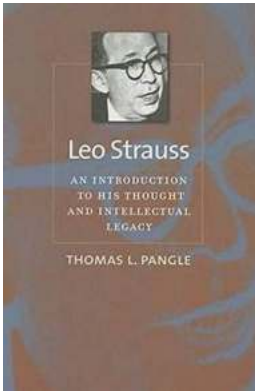
From Chaucer And Durer To Picasso And Disney: The Evolution of Art and Entertainment

Art and entertainment have always been intertwined, constantly influencing and inspiring each other throughout history. From the literary world to visual arts and from...



Unveiling the Menace: Multiple Myeloma And Other Plasma Cell Neoplasms Hematologic Malignancies

Did you know that multiple myeloma, a cancer formed by malignant plasma cells, is the second most common hematologic malignancy? This silent and treacherous culprit accounts...



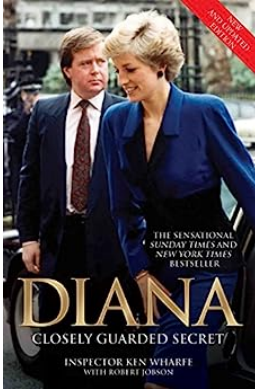
An Introduction To His Thought And Intellectual Legacy

The Johns Hopkins Institution, founded in 1876, has left an indelible mark on the intellectual landscape of America. The institution owes much of its success to the...



Step By Step Guide To Data Analysis Using IBM SPSS

In the world of data analysis, IBM SPSS is a widely used software that provides professionals and researchers with a comprehensive set of tools to...



Diana's Closely Guarded Secret: New And Updated Edition

Princess Diana, also known as the People's Princess, captivated the world with her beauty, grace, and compassionate nature. From her fairytale wedding to...

multiple myeloma and other serum protein disorders

multiple myeloma and other cancers